

AR-MI50 User Guide



User Guide

Thank you for purchasing the MI WITNESS

Please read this User Guide in detail to enable you to use the MI WITNESS correctly. This guide may contain some editorial errors and content omission concerning the product and may be changed in the future without prior notice for the improvement of the product.

Warranty & Support

- MI WITNESS is supplied with a 12-month warranty.
- The SD card carries a 6-month warranty.
- For technical assistance please visit <http://www.mi-witness.co.uk>
- The latest Firmware & User Guide are available to download at <http://www.mi-witness.co.uk>
- The user is responsible for any damage, caused by the inappropriate use of the MI WITNESS.
- TTW Group are not responsible for any losses (i.e., financial loss, direct/indirect damage...) in regards to any incidents that may occur using the MI WITNESS.

Certification

- Device Name: In-Car Recording System
- Model Number: AR-MI50
- Company Name: TTW Group
- Country of Origin: South Korea
- Customer Support: www.mi-witness.co.uk
- Website: www.mi-witness.co.uk
- AR-MI50 has been tested and certified CE, FCC, KCC, and complies with RoHS

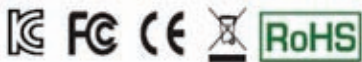


Table of Contents

01 General Information

1.1	Safety Precautions -----	6p
1.2	Product Features -----	9p
1.3	Package Contents -----	10p
1.4	Product Part Names -----	11p
1.5	Inserting the Mi Witness into the windscreen mount -	13p
1.6	Installation -----	14p

02 Getting Started

2.1	Connecting Power and Powering Up -----	16p
2.2	Disconnecting Power and Powering Down -----	17p
2.3	Continuous Recording -----	18p
2.4	Events Recording -----	19p
2.5	Parking Mode Recording ----	20p
2.6	Manual Recording -----	21p
2.7	Recorded Contents on Memory Card -----	22p
2.8	Additional Features -----	23p
2.9	MI Witness Operation guide -	24p
2.10	File management -----	25p
2.11	Upgrading firmware -----	26p
2.12	Connecting GPS -----	27p

03 PC Viewer

- 3.1 MI Viewer Installation --- 28p
- 3.2 MI Viewer explanation - 34p
- 3.3 Settings ----- 37p

04 Smart App

- 4.1 Smartphone App installation ---- 38p
- 4.2 How to use application program - 41p

05 Product Description ----- 44p

06 Customer Support -----45p

07 Product Warranty -----46p

1.1 Safety Precautions

Power

- Use only approved accessories provided by the manufacturer or supplier. TTW Group is not responsible for any damage caused to the MI WITNESS by using products and accessories that have not been approved.
- Do not connect the MI WITNESS to any other power supply. Using a higher rated voltage will damage the MI WITNESS and may cause a fire.
- Installation methods will differ depending on the vehicle type; if in doubt please seek help from an installation engineer. Avoid passing cables in front of airbags.

Installation

- Do not install the MI WITNESS where it will block your line of sight while driving.
- Do not allow any substances or liquids into the MI WITNESS
- Do not force or put pressure on the MI WITNESS
- Install the product away from the reach of children or pets
- There are no user serviceable parts in the MI WITNESS. Do not disassemble the MI WITNESS

Usage

- It is recommended that you record 5-10 minutes of video and check to see if the recorded video is properly saved before actually using the product.
- Heavily tinted windows may decrease GPS reception and video quality.
- The optimal temperature for normal operation and video recording is 0 - 50C
- Do not wipe the product using any chemicals or detergents



- If these safety precautions are not followed, the user may face serious injury.
- Do not tamper with the MI WITNESS while driving.
- The MI WITNESS makes use of a camera for recording video; hence in extreme cases of sudden changes in light, such as entering a dark tunnel while driving, facing a strong backlight during a bright day, or the lack of any sort of light at night, recording may not function properly and the image quality could be reduced.
- If the MI WITNESS is damaged during a serious accident, the MI WITNESS may not film the incident.
- Never remove the SD Memory Card during operation or during upgrading. It may cause damage to the SD Memory Card. (SD Memory guarantee period is 6 months)
- When attaching the MI WITNESS to the window, ensure the glass is clean first making sure it is dust and grease free and completely dry. Warming the windscreen can also help.
- Extreme prolonged high temperature may effect the functioning of the MI WITNESS camera.
- The MI WITNESS has a built in battery. Leaving this device in high temperature for a long period of time may be dangerous. When the temperature of the car increases - during hot summers - we recommend that the product be stored safely away from the heat.
- If you experience any strange odours from the Cigar Power Cable, stop using and contact your retailer.
- The TTW Group is not responsible for any damage caused by the inappropriate use of the MI WITNESS or for any malfunctioning due to an incident
- The WiFi & Rear Camera will not function in Battery Mode.
- Videos will not be saved into the Micro SD card when you are in the real time view mode when connected to a Smart phone using WiFi function.
- Do not connect non approved devices to the USB Port or attempt to charge any device from this port, this will damage the MI WITNESS
- If the product does not operate, try a Reset by using a paper clip.
(Reset hole is located to the side of Micro SD card).

1.1 Safety Precautions

Micro SD card inserting and removing from the MI WITNESS

- Please insert the Micro SD card first and then connect the power cable to the product.
- Please remove the power cable from the product, allow the MI WITNESS to shut down (30 seconds) and then remove Micro SD card.
(It may cause damage to the SD card if you remove it during shut down)

Formatting the Memory

- If formatting is required due to any memory problems, press the REC button for approx 5 seconds. You will hear a snap shot sound lasting two seconds and then the formatting message. After the formatting message, press the REC button shortly to progress formatting. If formatting is completed, there will be a formatting completed message from the product.
- We highly recommend formatting the Micro SD card once a week to prolong the life of the SD card and maximise reliability.

GPS

- Video recording will function regardless of GPS status or GPS lock.
- The optimal temperature for GPS operation is 0 ~ 50 °C
- If the MI WITNESS is being used for the first time or if it has not been used for more than three days the GPS may take longer to acquire its location.
- Install product avoiding any areas or situations that may interfere with the GPS signal. It is always best to test the chosen location prior to installing.

1.2 Product Features

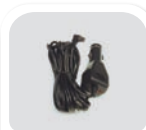
- 1280 x 720 HD high quality resolution (Max 30 frames)
- Camera 2M (2,000,000 pixel) / Diagonal 120°, Horizontal 90°
Vertical 67.5° View angle
- 2 Channel (Front, Optional Rear)
- Android App supports viewing video and changing settings
- LED indications for operation, recording, parking mode
- 3-axis acceleration G-Sensor
- GPS (Automatic time setting & positioning map)
- Optional WiFi for smartphone connectivity
- Events Recording - Save the scenes of an incident
- Events Recording sensitivity - Setting is supported through the acceleration sensitivity settings menu
- Built-in Lithium Polymer Battery (for Snapshot and potable video recording)
- Manual (Emergency) Recording - Specifically save desired scenes
- Parking Mode - Detect the smallest movements and impacts
- Microphone for sound recording (On/Off from settings menu)
- Voice guides for operational and warning status
- Recording modes (Normal/Event/Parking/Manual/Snap shot)
- Micro SD card (Default : 8GB Class 10, Support up to 32GB Class 10)
- Viewer application (PC/MAC/iOS/Smart phones)

1.3 Package contents

- MI Witness Camera and Mount, USB Cigar Power cable, Micro SD Memory Card (User Guide, PC Viewer File included), Double-sided tape, Quick Start Guide, Cable holders (4), Micro SD card adaptor



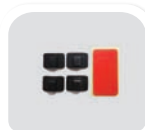
[MI witness]
Body



[MI witness]
Cigar Power cable



MicroSD Card &
Micro SD adaptor



Cable holders 4 &
Double-sided tape



Quick Start Guide

- Optional Items: WiFi dongle, rear camera, car battery protection cable, Pouch



Rear Camera*



Wi-Fi Dongle*



Car Battery
protection cable*



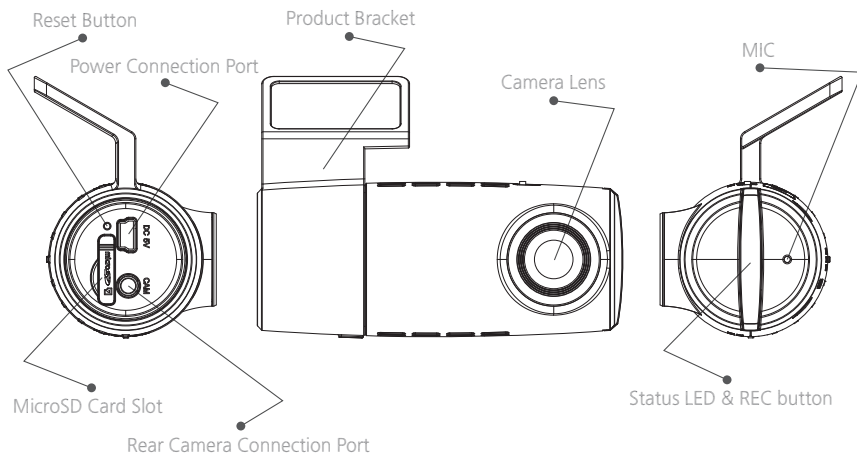
Pouch*

*If there are any missing items or problems with received items, please contact your retailer.
The enclosed parts and optional accessories are subject to change without notification.
Optional items may be purchased separately at www.mi-witness.co.uk

1.4 Product Part Names

Front and Sides

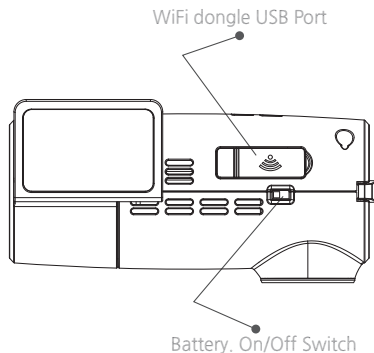
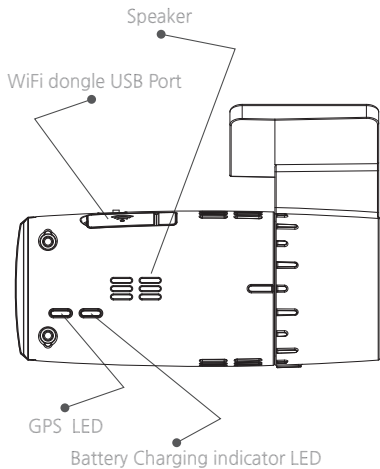
- Product Bracket, MIC, Camera Lens, Status LED & REC button, MicroSD Card Slot, Rear Camera Connection Port, Power Connection Port, Reset Button



1.4 Product Part Names

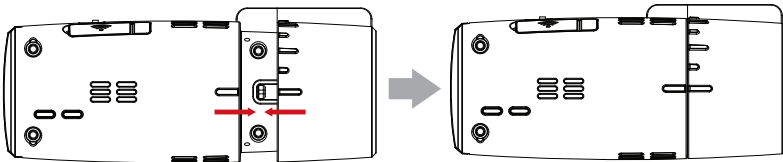
Rear

- WiFi dongle USB Port, GPS LED, Battery Charging indicator LED, Battery. On/Off Switch, Speaker



1.5 Inserting the MI Witness into the windscreen mount

- To attach & remove the MI Witness from the windscreen bracket, please make sure the lines on the MI Witness and the windscreen bracket line up with bottom line as per the image below.
- You can also adjust the camera viewing angle, by rotating the MI Witness within the bracket.



1.6 Installation

1. Insert the Micro SD Memory Card into the MI WITNESS

- Be sure to check the direction of the card is correct when inserting



2. Decide where you plan to position the MI WITNESS

- The space behind the interior mirror is an optimal position.
- Clean the windscreen location from dust and grease
- Take off the 3M of tape before attaching



1.6 Installation

3. Connect the cables

- Connect MI WITNESS to an accessory socket or Cigar socket and USB cable to the MI WITNESS



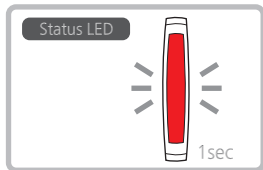
4. Adjusting viewing direction

- Adjust camera direction to get the view you desire. You can use the live feed on a Smart phone app if needed to see the camera view.
- Then tidy up the cables avoiding any airbags.

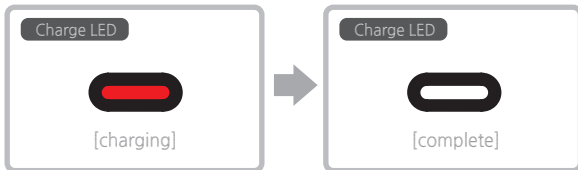


2.1 Connecting Power and Powering Up

- After approximately seven seconds of applying power the Status LED illuminates for 6 seconds, then turns off, then illuminates again for approximately 6 seconds, followed by a voice message, "Welcome to MI Witness." After approximately 5 seconds the Status LED flashes, with a voice message, "Continuous recording begins." Now the camera is in normal recording mode.



- If the internal battery is not fully charged, the red LED will be ON. The Red LED will turn Off when the battery is fully charged.

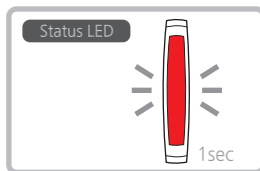


2.2 Disconnecting Power and Powering Down

- Turning off the power
 - Upon powering down the MI WITNESS the Status LED illuminates and the camera saves the last recorded files. Product will say "MI Witness is shutting down. Goodbye" during shut down.

2.3 Continuous Recording

- When Status LED flashes, all the video and data is being recorded and saved in “blackbox/rec” folder

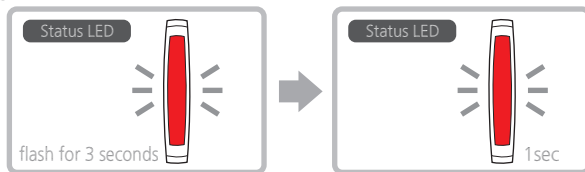


- The contents of Continuous Recording files
 - Continuous Recording files are saved with a file name, “Rec_year & dateg_time_ S(single) or D(dual).avi”, based on the time of onset of recording. Each file is saved to represent “year_month_day_hour_minute_second”.
- Continuous Recording files are recorded at 30fps (frames per second)
 - If the Rear Camera is connected, files are saved at 20fps for the front and 15fps for the rear camera.

FILE LIST		G:₩ SD CARD
FileName		
Rec_20121105_120928_S.avi		
Rec_20121105_122019_D.avi		
Rec_20121105_122119_D.avi		
Rec_20121105_122220_D.avi		
Rec_20121105_122303_S.avi		

2.4 Events Recording

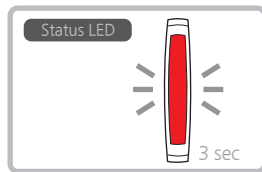
- G-Sensor detects impacts on the vehicle and saves the file to “blackbox/event” folder.
- Event recording records video total 20 seconds from approximately ten seconds before and after the detected impact at 30fps. (If the Rear Camera is connected, files are saved at 20fps for the front and 15fps for the rear camera.
- If the Event Recording starts continuous recording is suspended to so as to record the event.
- Events Recording files are saved with a file name, “Event_year & date_time_S(single) or D(dual).avi”, based on the time of onset of recording. Each file is saved to represent “year_month_day_hour_minute_second”.
- When an impact is detected, Status LED will rapidly flash for 3 seconds, along with a warning sound from the MI WITNESS.



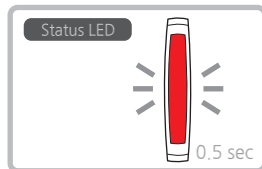
- If REC button is pressed during Events Recording, an Events Recording file will be created and saved to the Manual folder. Video of ten seconds before and after from the time of pressing the button is recorded (Total 20 seconds).

2.5 Parking Mode Recording

- Parking Mode
 - If no movement is detected for 5 minutes during Continuous Recording, the product automatically switches to Parking Mode. It will record for a total of 40 seconds (20 seconds before and after the impact at 5fps) when the camera detects movement from the front or rear camera. (If the rear camera is connected-five frames from the front and rear each)
- Parking Recording Mode
 - Status LED Flashes every 3 seconds.

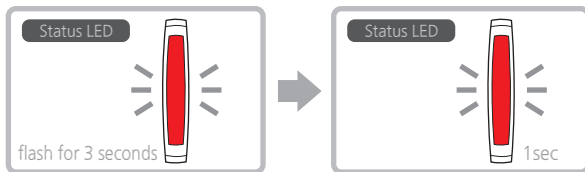


- If there are any changes during recording the Status LED flashes every 0.5 seconds for approximately 20 seconds and continues recording. (After flashing fast for 20 seconds, if there is no car movement, it will flash every 3 seconds).



2.6 Manual recording

- If REC button is pressed during recording, Status LED flashes fast for 3 seconds and total 20 seconds will be recorded (each 10 seconds before and after) with 30 frames. (If a rear camera is connected, 20 frames from the front and 15 frames from the rear are recorded).



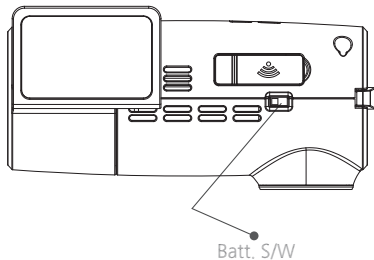
- If an impact is detected during Manual Recording, an additional Manual Recording file will be saved that contains 10 seconds from the time of impact.

2.7 Recorded Contents on Memory Card

- Each recording mode is allocated memory space, new video files will overwrite the oldest files saved when this space is full.
- Minimum available memory
 - Normal recording is possible if there is at least 100MB of free memory.
 - Memory usage during regular recording : Continuous Recording (50%)
Events Recording (10%)
Manual Recording (10%)
Parking Recording (20%)
Operation Memory + Snapshot (10%)
 - Memory usage can be selected for each recording type from Setting in MI Viewer.
 - If memory usage is altered in the system preferences, saved data on the SD Card may be deleted. It is advised that data is backed up on a computer before you change any settings.

2.8 Additional functions

- Voice guide
- Snapshot Function - Press the REC button for 2 seconds , a snapshot is saved.
- Portable Recording and Snapshot Function
 - Even if the Power Cable is not connected, because the MI WITNESS contains a built-in battery, the product can be turned on and the Continuous Recording mode will start. Likewise, in this mode, if REC button is pressed (for two seconds), a snapshot is saved.
 - Please turn off battery switch off when product is connected with vehicle power.



2.9 MI Witness Operation guide according to situation

Performance & Status	Status LED	Voice-Over
[MI witness] start	ON	"Welcome to MI Witness"
F/W Upgrade begins	Fast Flickering	"Upgrade begins." Please do not turn off the device"
F/W Upgrade Completed	ON	"Upgrade is completed"
Continuous Recording begins	Flickering	"Continuous Recording begins"
MicroSD Card insertion	Flickering	"MicroSD Card is inserted"
MicroSD Card removal	Fast Flickering	"MicroSD Card was removed improperly"
No MicroSD Card	Fast Flickering	"MicroSD Card cannot be recognized." "Please insert MicroSD Card."
Event Recording	Fast Flickering (for 3sec)	"di-ding" beep sound twice
Manual Recording begins	Fast Flickering (for 3sec)	"Manual Recording begins."
Snap Shot	Fast Flickering (for 3sec)	Sound for taking photo
MicroSD Card Format Setting	Fast Flickering (for 5sec)	"Please press recording button for five seconds to start formatting SD Card."
MicroSD Card Formatting	ON	"SD card formatting will begin." "Please do not turn off the device during formatting." "SD Card -formatting is completed"
Transfer Automatic Parking Mode	Slow Flickering	"Parking Recording Mode begins."
Automatic Parking Recording begins	Flickering	

Performance & Status	GPS LED	Voice-Over
GPS Connected	ON	"GPS has been received."
GPS Not Connected	OFF	

2.10 File management

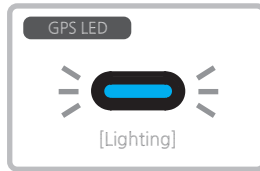
- If there is no more space left on the Micro SD Card, new video files will overwrite the oldest files saved.
 - Depending on the storage space of the MicroSD Card, video files can be deleted within a short period of time, it is important files are backed up in an external storage device if you need to recover them at a later date.

2.11 Upgrading firmware (only use files downloaded from www.mi-witness.co.uk)

- Upgrading procedure is as follows:
 - 1) Copy firmware upgrade files into Micro SD Card and insert the Micro SD Card into MI Witness Camera.
 - 2) Power up the MI WITNESS. When power is turned on after approximately 7 seconds, Status LED lights up for six seconds and MI WITNESS will say "Upgrade begins. Please do not turn off the product." Status LED flickers fast at this point. (Do not turn off power during upgrading).
 - 3) When the upgrade is completed, the product will say "Upgrade is completed", followed by a voice message, "Continuous recording begins," and then Continuous recording will start.
- The MI WITNESS has now been successfully upgraded.

2.12 Connecting GPS

- When the GPS receives a GPS Lock, a voice message, “GPS has been received” will be announced and the GPS LED light will illuminate.



3.1 Program installation

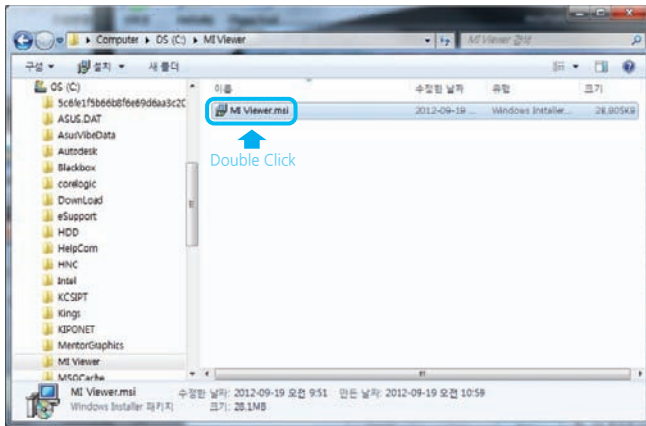
1. Downloading MI Viewer program

- To see video files and change settings you must install viewer program "MI Viewer" to your computer. There will be a viewer program provided in your Micro SD or you can download from the website, www.mi-witness.co.uk
- PC System Requirements
 - OS : XP (32bit), Vista (32bit), Window 7 (32/64bit) H/W : PENTIUM4 at least 2 GHz
 - RAM : at least 1G
 - NET Framework at least 4.0
- When using XP, you must install Service Pack 3

3.1 Program installation

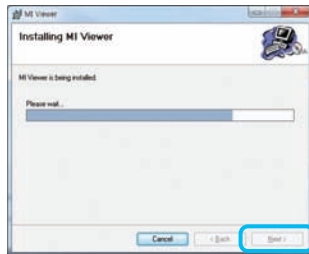
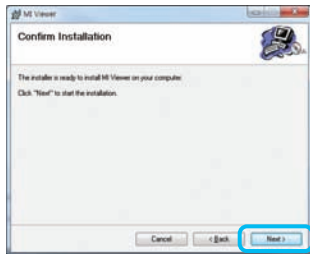
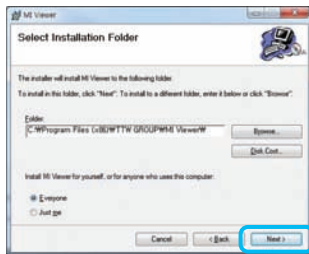
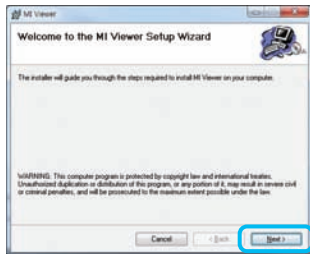
2. Installing MI Viewer program

1) Double click the downloaded "Setup" file to open.



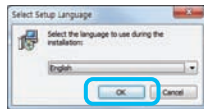
3.1 Program installation

2) Click “OK” or “Next” from each install window

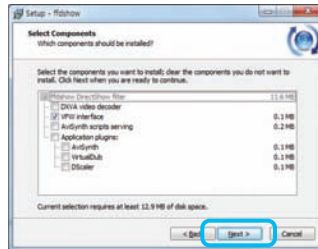
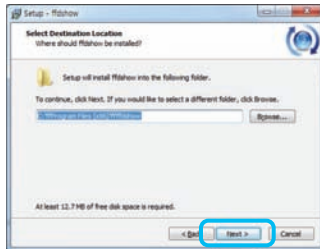


3.1 Program installation

3) Click "OK" or "Next" from each install window

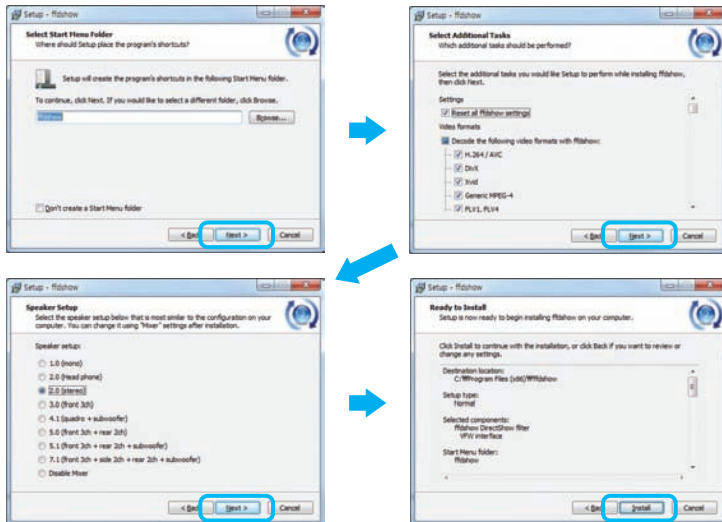


After you select a language, then click the "OK" button.

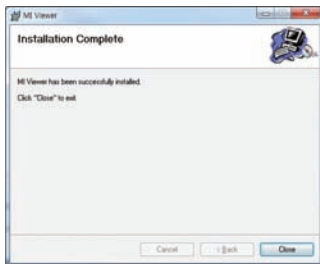
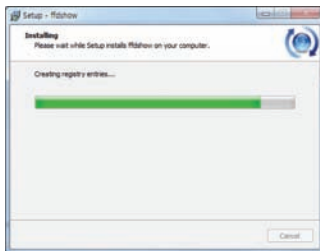


3.1 Program installation

4) Click “OK” or “Next” from each install window



3.1 Program installation



After completing NET Framework installation, MI Viewer will start to install the program. When installation has completed, there will be a viewer icon generated in the desktop.

If you have completed installing the viewer program, you are now ready to run the MI Viewer program. Please go to the next page for details.

3.2 MI Viewer explanation

- Double click MI Viewer icon on your desktop. You will see a viewer window as below.



- To see the video the Micro SD card must be inserted into your computer.



3.2 MI Viewer explanation

The screenshot displays the MI Viewer application interface, which is divided into several sections:

- 1 VIEWER:** The main window title.
- 2:** A yellow circle highlighting the road view, showing a car driving on a road.
- 3:** A yellow circle highlighting the map view, showing a street map with a location marker.
- 4:** A yellow circle highlighting the playback controls, including play, pause, stop, and fast forward buttons.
- 5:** A yellow circle highlighting the time display, showing 00:22/01:01.
- 6:** A yellow circle highlighting the sensor data graph, showing a line graph with X, Y, and Z axes.
- 7:** A yellow circle highlighting the speed display, showing 015 mph.
- 8:** A yellow circle highlighting the GPS status icon.
- 9:** A yellow circle highlighting the latitude and longitude coordinates.
- 10:** A yellow circle highlighting the speed unit (km/h).
- 11:** A yellow circle highlighting the speed display (015 mph).
- 12:** A yellow circle highlighting the speed display (015 mph).
- 13:** A yellow circle highlighting the speed display (015 mph).
- 14:** A yellow circle highlighting the map controls, including zoom in, zoom out, and reset buttons.
- 15:** A yellow circle highlighting the map data copyright notice (Map data ©2012 Google).
- 16:** A yellow circle highlighting the map data copyright notice (Map data ©2012 Google).
- 17:** A yellow circle highlighting the file list table.

The file list table shows the following data:

Filename	Date	Size
Rec_20121001_060017_D.avi	12.11.30	39,555
Rec_20121001_060117_D.avi	12.11.30	39,445
Rec_20121001_060217_D.avi	12.11.30	39,165
Rec_20121001_060318_D.avi	12.11.30	39,807
Rec_20121001_060418_D.avi	12.11.30	39,492
Rec_20121001_060518_D.avi	12.11.30	39,346
Rec_20121001_060618_D.avi	12.11.30	39,564
Rec_20121001_060717_D.avi	12.11.30	39,262
Rec_20121001_060817_D.avi	12.11.30	39,962
Rec_20121001_060917_D.avi	12.11.30	39,179
Rec_20121001_061017_D.avi	12.11.30	39,342

At the bottom of the interface, there are tabs for NORMAL, MANUAL, EVENT, PARKING, and SNAPSHOT.

- Please find next page an explanation of each of the buttons and screens in the MI Viewer window.

3.2 MI Viewer explanation

- ① MI Viewer : You can quickly access the MI Witness website by clicking MI logo (www.mi-witness.co.uk)
- ② Play window A : shows the front camera video
- ③ Play window B : displays MAP / Second camera video / Zoom screen
If you click Zoom, you will magnify any point that your mouse cursor hovers over
- ④ Play scroll bar : This shows the playing position and you are able to adjust the video play position with the mouse.
- ⑤ Playback buttons : previous file, play , pause, stop, next file.
- ⑥ G-Sensor graph : shows impact to your vehicle with graph and numbers according X/Y/Z.
 - X-Axis : displays movement or impact from front and rear.
 - Y-Axis : displays movement or impact from right and left sides.
 - Z-Axis : displays movement or impact from up and down.
- ⑦ Volume : Use to adjust volume sound level
- ⑧ Screen switch : switch between front and rear cameras on the main screen
- ⑨ HD size screen : Full HD resolution Screen (1280 x 720)
- ⑩ Full size screen : magnifying the front screen to full screen
- ⑪ Screen capture : captures the current video image and saves it as a jpg file
(folder location: C:/Blackbox/snapshot)
- ⑫ Comprehensive report : shows photo, Google Map, G-Sensor data, time, etc.
You can add some text about captured image and print it out.
- ⑬ Speed and GPS location : Speed meter is able to change Mile to Km / Km to Mile
- ⑭ Menu bars for Viewer information, Setting and Minimize, Viewer exit
- ⑮ File export : exports indicated video file into your PC with mp4 format to be viewed in a general player.
- ⑯ Folder open : you can open folder to play files under that folder from your computer.
Note, MI Viewer can play saved videos only which are recorded by MI Witness.
- ⑰ File name - shows recorded file names according to date and time;
can choose and double click a file from the list or click the play button to play a video.
Files will be listed according to recording modes as at the bottom of this screen.
Click individual recording mode buttons to see file lists and play under the selected recording mode.

3.3 Setting

Click “Setting” button from the menu bar explained in the 3.2 MI Viewer explanation(14). You will see below window to set MI Witness functions.

To adjust the Setting value, Micro SD card must be inserted into your computer.

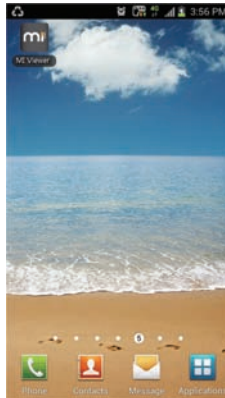
SETTING

- 1 MIC ☒ ON ☐ OFF
- 2 Voice Guide ☒ ON ☐ OFF
- 3 Voice Level 3
- 4 G-Sensor Level 3
- 5 Motion Level 4
- 6 Parking Mode ☒ ON ☐ OFF
- 7 Parking Mode LED ☐ ON ☒ OFF
- 8 Storage Type
- 9 Time Zone
- 10 Password
- 11

- 1 MIC - Microphone On/Off
- 2 Voice guide - Voice guide On/Off
- 3 Voice Level - Volume - set volume for voice messages (1 - 5)
- 4 G-sensor level - select acceleration sensor selectivity (1 - 5)
- 5 Motion level - select motion sensor selectivity (1 - 5)
- 6 Parking Mode - Parking Recording mode On/Off
- 7 Parking Mode LED - LED On / Off during Parking
- 8 Storage type - Memory space selection according to your preferred memory usage
NORMAL : N , MANUAL : M, EVENT : E, PARKING : P
(ex. N40% , M5% , E5% , P40%)
- 9 Time zone - select your country time zone
(* mark means that Daylight Saving Time)
- 10 Password - this is a four digit number for your own WiFi use.
Change p/w here and access through Smart phone.
- 11 OK/Cancel - press “OK” button after changing settings.

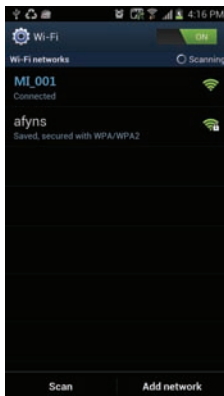
4.1 Smartphone App installation

- MI Viewer App is an app that allows you to use car MI Witness services from a smartphone.
 - To use a Smartphone App, a WiFi dongle must be installed.
1. Search “MI Viewer App” from an Android Market
(App Store App will be updated to be download later).
 2. Install downloaded “MI Viewer App” to your Smartphone.
You will see MI Viewer icon on your Smartphone as below.



4.1 Smartphone App installation

3. Go to your Smartphone settings to find the MI Viewer WiFi network from listed WiFi ports. File name will start with MI_XXX(XXX are three numbers from your product serial numbers. Click to connect WiFi.



4. Go back to your Smartphone desktop and Execute an MI Viewer icon to open the application.
5. Enter your password in the middle box and press “confirm serial number”. (Initial password is set with 0000) You can change the password from “Setting”. (Password consists of a 4 digit number)

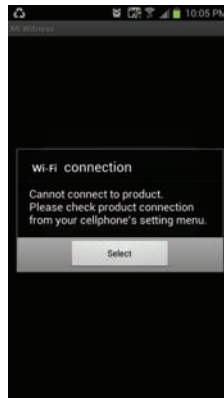


4.1 Smartphone App installation

6.If installation is successful, you will receive message “ Serial number confirmed” as below



6-1.If installation fails, you will see the message below . Please check your phone settings and WiFi dongle connection with the MI WITNESS and try again.



If WiFi is not stable, connection problem may occur.

4.2 How to use application program

1. Viewing Real time video

- Select “Real time video” from the menu to see real time video from your Smartphone.
 - Select “realtime video front” or “realtime video rear” to see video.
 - If the rear camera is connected, you can see video from the rear camera as well by selecting rear video at the bottom menu.

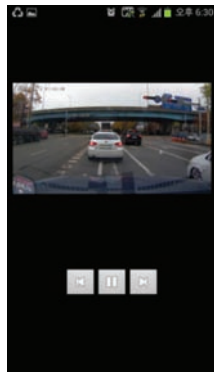
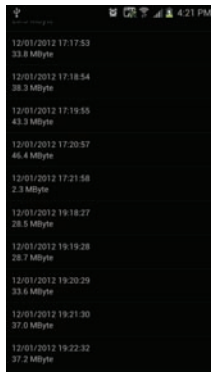
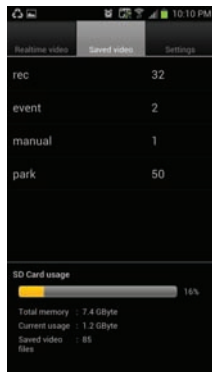


- If you make your phone horizontal, you will see a full size screen.

4.2 How to use application program

2. Viewing Saved video

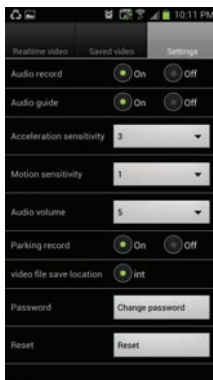
- Click "Saved video" from the top menu
 - You will see each folder name with saved file numbers. Click a folder from which you would like to see videos. From this window you can also see the SD card usage of your MI Witness at the bottom.
- You can click on the one you would like to see. Each file name is consisted with Month / Date / Year Hour : Minute : Second.



4.2 How to use application program

3.Setting MI Witness

- You can change MI Witness settings from the Smartphone.
 - Click "Setting" from the menu. Then, you will see the setting menu screen as below.
- If you change any settings on your Smartphone, there will be a sound, Ding dong - Ding dong, from the product.
(If the sound is OFF, there will be no sound from the product)



05 Product Description

05 Product Description

Categories	Description/Name
Model	AR-MI50
Color/Size/Weight	Black / (93(L) X 37(W) X 66(H) / 92g
Memory Storage	Micro SD (8G CLASS10)
Recording Mode	Continuous Recording, Events Recording, Manual Recording, Parking Recording
Camera	CMOS 2MP 2,000 000 pixels
Display Resolution	Front (1280 x 720) HD
Frames	30 frames/second
G-Sensor	3 axis sensor
Power	Input power (DC 12/24V), Output power (DC 5.5V), 1 Cigar Jack Port (USB B type), Internal battery (Lithium polymer)
Interface	Video (H.264), Audio (PCM)
Others	Audio recording and voice guide supported, LED supported, WiFi supported

06 Customer Support

06 Customer Support

- Serial Number
 - There is a serial number on the product
- Detailed help can be found at <http://www.mi-witness.co.uk/>.
- Important data stored on the MI WITNESS memory Card must be regularly backed-up.
- During any repairs, it is assumed that a user already made a back-up of all the files.
TTW Group cannot be held responsible for any deleted data.

07 Product Warranty

07 Product Warranty

Limited Warranties

All TTW Group products are guaranteed to be free from defects in materials or workmanship for one year from the date of purchase. Within this period, TTW Group will, at its sole discretion, repair or replace any components which fail to function. Such repairs or replacements will be made at no charge to the customer for parts or labor, provided that the customer takes responsibility for any postal charges. This warranty does not cover failures due to abuse, misuse, accident or unauthorized alterations, modifications or repairs. Note: Repairs have a 90 day warranty. If the unit sent is still under its original warranty, then the new warranty is 90 days or to the end of the original one year warranty, depending upon which is longer.

THE WARRANTIES AND REMEDIES CONTAINED HEREIN ARE EXCLUSIVE AND IN LIEU OF ALL OTHER WARRANTIES, WHETHER EXPRESS, IMPLIED OR STATUTORY, INCLUDING ANY LIABILITY ARISING UNDER ANY WARRANTY OF MERCHANTABILITY OR FITNESS FOR A PARTICULAR PURPOSE, STATUTORY OR OTHERWISE. THIS WARRANTY GIVES YOU SPECIFIC LEGAL RIGHTS, WHICH MAY VARY FROM STATE TO STATE. IN NO EVENT SHALL TTW GROUP BE LIABLE FOR ANY INCIDENTAL, SPECIAL, INDIRECT OR CONSEQUENTIAL DAMAGES, WHETHER RESULTING FROM THE USE, MISUSE OR INABILITY TO USE THE PRODUCT OR FROM DEFECTS IN THE PRODUCT. SOME STATES DO NOT ALLOW THE EXCLUSION OF INCIDENTAL OR CONSEQUENTIAL DAMAGES, SO THE ABOVE LIMITATIONS MAY NOT APPLY TO YOU. TTW Group retains the exclusive right to repair or replace the product or offer a full refund of the purchase price at its sole discretion. SUCH REMEDY SHALL BE YOUR SOLE AND EXCLUSIVE REMEDY FOR ANY BREACH OF WARRANTY.

Procedure for Claims

To obtain warranty service, an original or copy of the sales receipt/ invoice from the original retailer may be required. Online auction confirmations are not accepted for warranty verification, and TTW Group will not replace missing components from any package purchased through an online auction. TTW Group retains the exclusive right to either repair or replace the unit with a "newly-overhauled" (NOH) unit or new unit at its sole discretion. The same policy shall apply to software. Please complete these two easy steps:

1. Contact TTW Group Product Support to receive an RMA number
E-mail TTW Group Product Support and describe the problem and request a return material authorisation (RMA) number. You will need to provide the unit's serial number (if applicable), your return shipping address, a daytime phone number and an email address, and a copy of your purchase receipt.
E-mail: technical@mi-witness.co.uk
2. Once you have received your RMA number, ship the unit using registered post or similar (your MI WITNESS product is your responsibility until we receive it), writing the RMA number on the outside of the packaging and in the covering letter, to the following address:

TTW Group Gothic House Barker Gate Nottingham NG1 1JU